

# AusSeabed Webinar Series

*Bringing the seabed to you*

Session Chair: Alan Jordan (*NESP Marine Biodiversity Hub Director*)

30<sup>th</sup> July, 2020

## Housekeeping

*Please keep video off and microphone muted unless presenting!  
Type questions in the chat and they will be collated by facilitators.  
Your input is critical!*





*We acknowledge the Traditional Owners of the land and sea country in Australia, The Aboriginal and Torres Strait Islander People.*

*They were the first scientists, explorers, resource experts, and environmental managers. Their custodianship sets the benchmark for true sustainability.*

*We would like to pay our respects to Elders past and present and extend that respect to any Aboriginal and Torres Strait Islander people who are joining us today.*

**1100 General Business**– Alan Jordan (Director; NESP MBH)

Welcome

Work Plan 2020/21 summary

Steering Committee Election Outcomes

**1115 Lightning Talks**

Coastal Management: State-wide LiDAR for NSW – Tim Ingleton (NSW DPIE)

Mapping marine cultural heritage in the Pilbara – Mick O’Leary (University of Western Australia)

**1135 Tools and Standards Workshop** (Natalie Lennard; GA)

AusSeabed Coordination Tool (Natalie Lennard & Lachlan Hurst; FrontierSi)

AusSeabed QA Tool (Matt Boyd; CSIRO & Lachlan Hurst)

**1215 Lightning Talks**

Mapping Coral Reefs from space – Emily Twiggs (EOMAP)

Mapping intertidal reefs in the Lord Howe Island Marine Park – Caitlin Woods (University of Wollongong)

**1235 Questions and close** – Alan Jordan

**AusSeabed Webinar Series**

JUNE 25

JULY 30

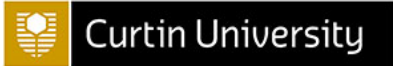
AUGUST 27

SEPTEMBER 24

# General Business

Alan Jordan





Australian Government  
Geoscience Australia



**Our Mission**  
Department of Transport  
**PHS** Improve the coverage, availability, discoverability and accessibility of seabed mapping data  
Precision Hydrographic Services



**Our Vision**  
By 2030, all available seabed mapping data with a marine estate will be readily and openly available, and new data acquisition will take into account the needs of a wide range of users

**AUS**

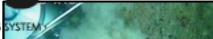
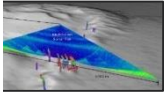
**SEABED**



NORTHERN TERRITORY GOVERNMENT



NIWA



Government of South Australia

BES Water Column

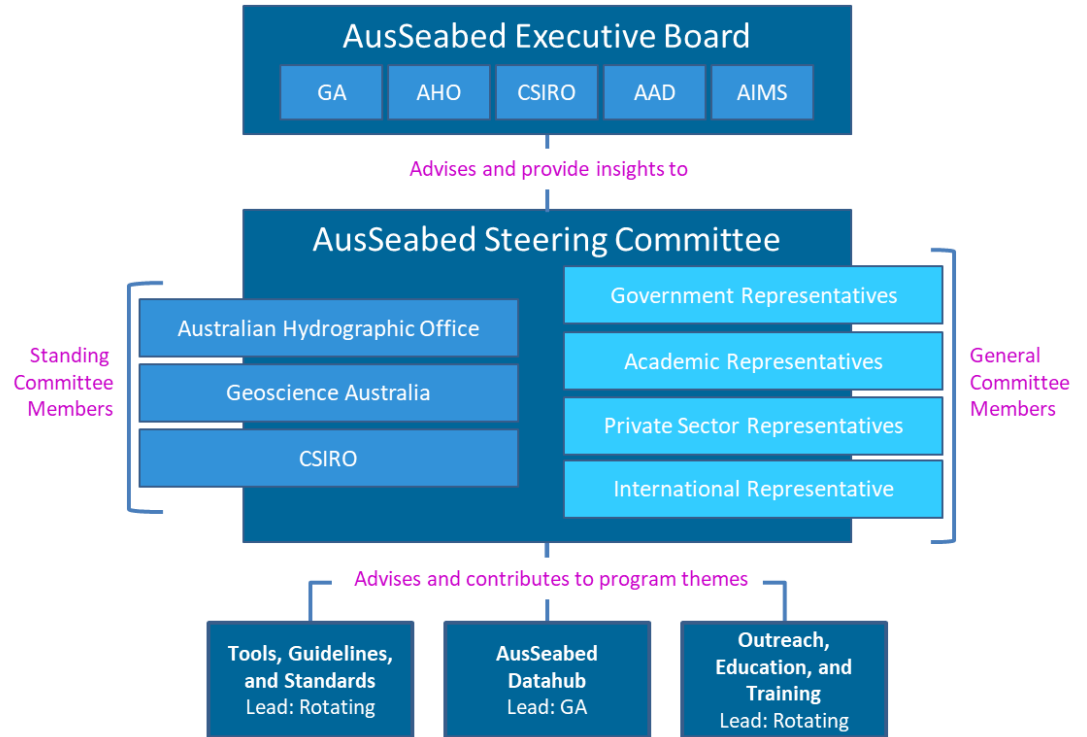
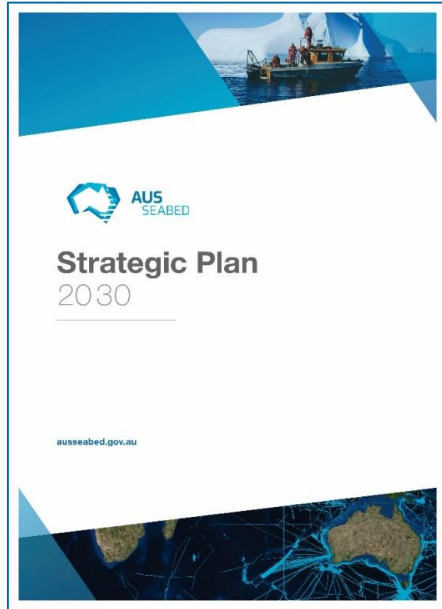
Sub-Bottom

Sediment Samples

FRONTIER

ixblue

# Governance



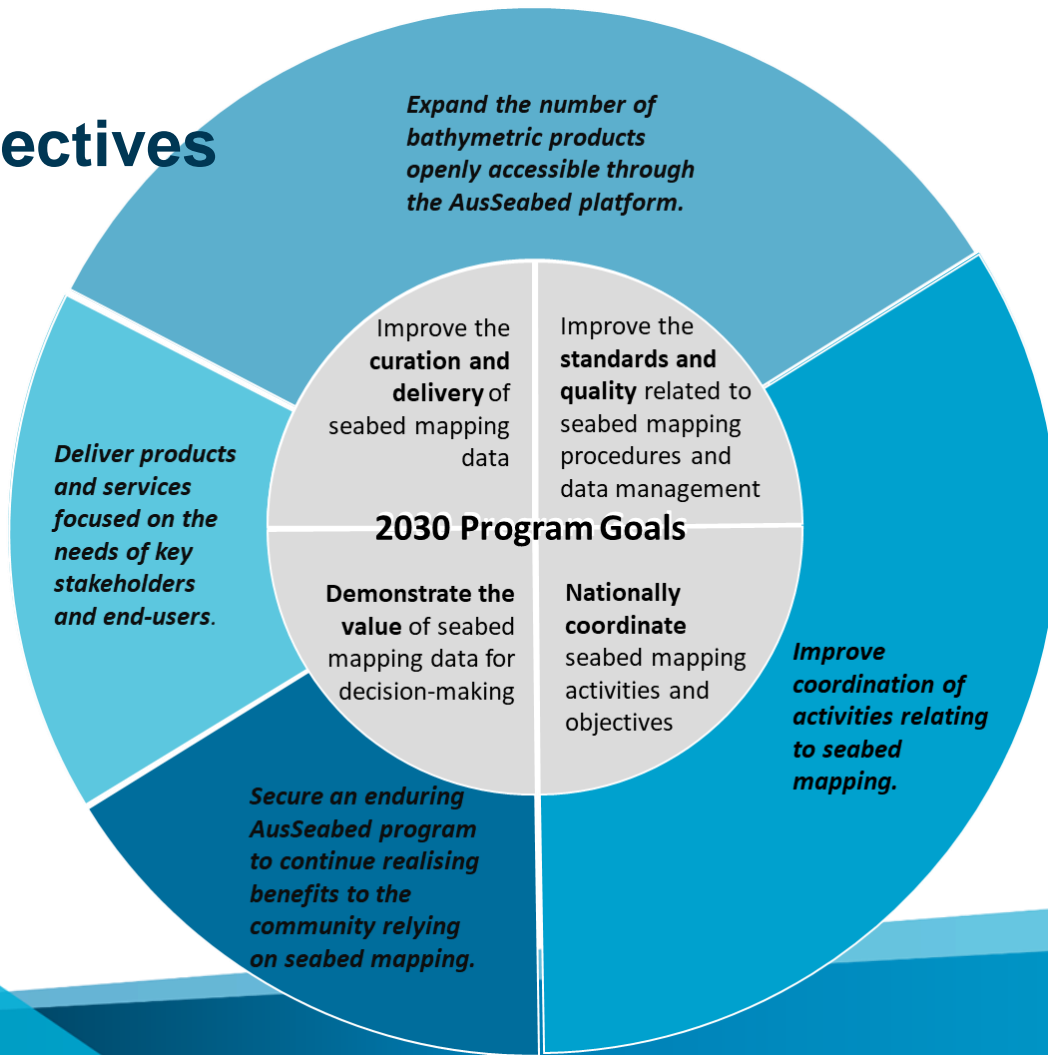
# AusSeabed 2020/21 Work Plan

- Approved by the AusSeabed Executive Board
- Will be published online soon



*AusSeabed 2020/21 Work plan*

# Objectives



# Strategies

- by diversifying the Steering Committee membership with end-users representatives*
- by pro-actively engaging with end-users to co-design infrastructure and services*
- by easing the process to submit data or integrate new 'local hubs'*
- through uptake of AusSeabed Coordination Tools*
- increased number of stakeholders and end-users using or recommending AusSeabed guidelines*
- by formalising agreements amongst core organisations*
- developing attractive prototypes and funding proposals*



# Key activities and outputs

## Accessible Layers & Datasets

National Mapping Priority layer v.2  
(National prioritisation framework workshop)



Provision of MNF & GA Multibeam datasets v.1 (AusSeabed standards)



Provision of AHO HIPP datasets



Provision of 'Local hubs' datasets & 'data provider' datasets v.0

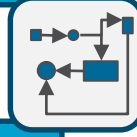


## Infrastructure Development

QA tool operating on most bathymetry data type & including packaging function



Operational MBES Automated Processing Pipeline v.1



Federated data warehouse for known 'local hubs' & all bathy type



Portal & website optimisation based on end-user engagement



# Key activities and outputs

## Governance & Management

Economic Benefit Analysis



ARDC proposal



Agreements with key partners



## Engagement & Communication

Workshop with Index of Marine Survey Assessment group in WA



Workshop with marine estate managers & decision-makers from Commonwealth & State Gov's



Training material for Tools & Portal



Guidelines for various bathy data types



# Budget and key partners

Overarching activities	FTE	Hard cost
Governance and management	0.5	\$75,000
Engagement and communication	1.0	\$30,000
Accessible data and layers	2.0	\$15,000
Infrastructure development	6.0	\$135,000
<b>Total</b>	<b>9.5</b>	<b>\$255,000</b>



# AusSeabed 2020/21 Steering Committee Elections

The Steering Committee has a staggered renewal process which sees half of the general membership renew each year to provide continuity between committees



A big thanks to our outgoing members who have been invaluable during the initial stages of the AusSeabed program



Australian Government  
Department of Agriculture, Water and the Environment  
Australian Antarctic Division



# Steering Committee Renewal Outcome

## Academic

Curtin University



Rep: Iain Parnum

## Federal

Department of  
Agriculture,  
Water and  
Environment



Rep: Evan Hallein

## Private

IIC Technologies



Rep: David Crossman

## State Gov

South Australian  
Research  
Development  
Institute



Rep: Gretchen  
Grammer

## State Gov

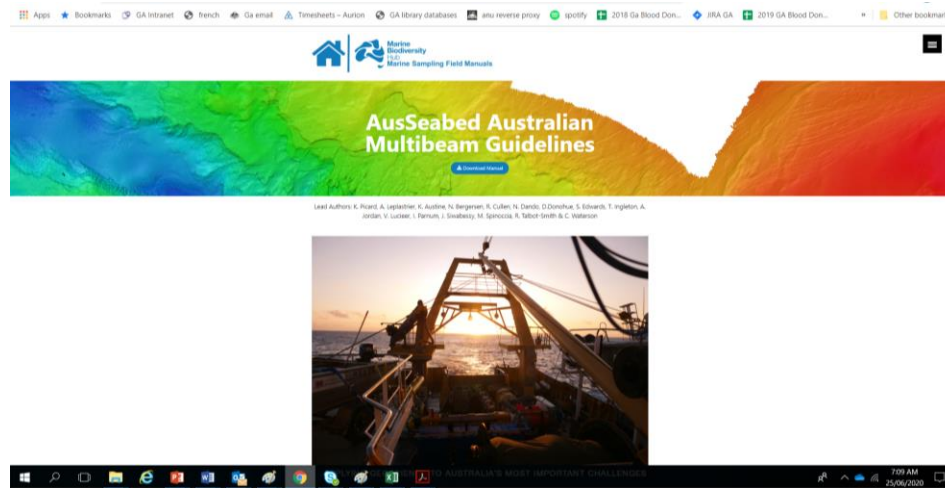
New South Wales  
Department of  
Planning, Industry  
and Environment



Rep: Tim Ingleton

# What's new since the last webinar?

Australian Multibeam Guidelines Version 2 Published and available at:  
<https://australian-multibeam-guidelines.github.io/>



## Lightning Talks

Coastal Management: State-wide  
LiDAR for NSW – Tim Ingleton  
(NSW DPIE)

Mapping marine cultural heritage  
in the Pilbara – Mick O’Leary  
(University of Western Australia)



**Quick 3 minute Break!**

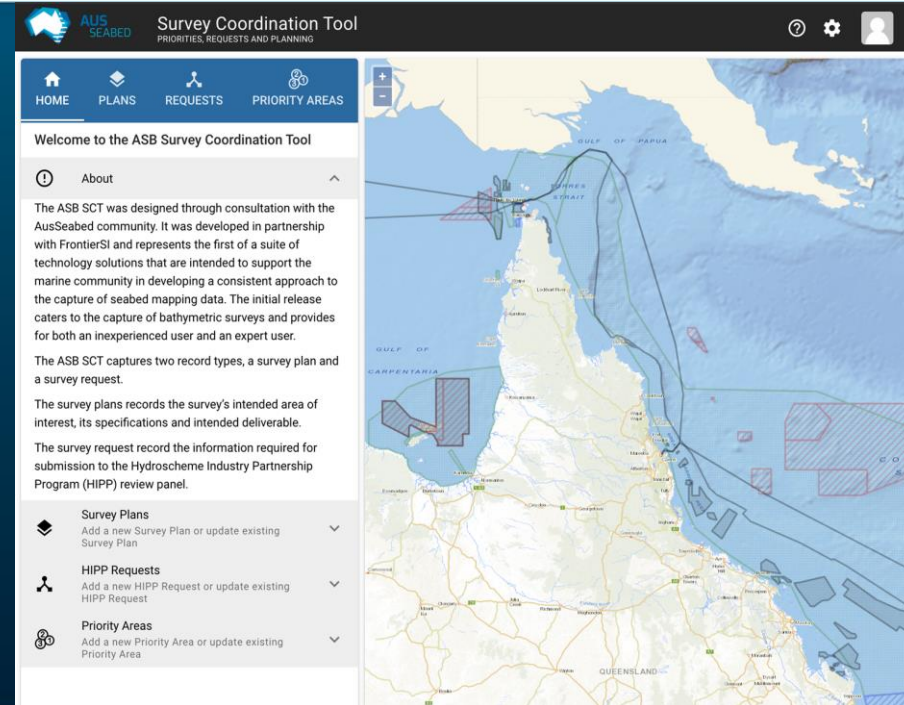




# Workshop Activity

AusSeabed Coordination Tool (Natalie Lennard & Lachlan Hurst; FrontierSi)

AusSeabed QA Tool (Matt Boyd; CSIRO & Lachlan Hurst)



The screenshot displays the 'Survey Coordination Tool' interface. At the top, the AUS SEABED logo is on the left, and the title 'Survey Coordination Tool' with the subtitle 'PRIORITIES, REQUESTS AND PLANNING' is on the right. Below the title bar is a navigation menu with icons for HOME, PLANS, REQUESTS, and PRIORITY AREAS. The main content area on the left contains a 'Welcome to the ASB Survey Coordination Tool' message, an 'About' section with descriptive text, and a sidebar menu with three items: 'Survey Plans', 'HIPP Requests', and 'Priority Areas', each with a sub-item description and a dropdown arrow. On the right, a map of the Gulf of Papua and Gulf of Carpentaria is shown, with several red-shaded rectangular areas indicating priority zones or survey plans.

## Lightning Talks

Mapping Coral Reefs from space – Emily Twiggs (EOMAP)

Mapping intertidal reefs in the Lord Howe Island Marine Park – Caitlin Woods (University of Wollongong)



# AusSeabed Webinar Series: Bringing the seabed to you

**DATES** Tune in from 1100 - 1245 AEST on the last Thursday of each month

~~**JUNE 25** National to International perspectives on seabed mapping~~

~~**JULY 30** Mapping for management in the Anthropocene~~

**AUGUST 27** Data sharing and collaboration

**SEPTEMBER 24** Cross sector talks on the applications of seabed mapping

The session schedules will be available on the AusSeabed website

<b>Thursday 27 August 2020</b> Workshop theme: Engagement Talks: Sharing and Collaborating	
<b>Kam Austine (session chair)</b> Welcome Workplan 2020/21 summary	<b>Thursday 24 September 2020</b> <b>Theme/talks:</b> Industry, Government, Stakeholders, End-users
<b>Chris Gentle, WA DoT</b> IMSA	<b>Paul Kennedy (session chair)</b> Welcome Workplan 2020/21 summary
<b>Rob Beaman, JCU</b> Gridding the straits: Bass Strait	<b>Allison Broad, UOW</b> Ship anchorages and benthic habitat
<b>Ralph Talbot-Smith</b> Educating the next generation Engagement and communication strategy End-user engagement sessions	<b>Joanna El Koury, EGS</b> Submarine cables and connecting Australia
	<b>Kam Austine, EGS</b> Australasian Hydrographic Society
	Questions
	<b>Sally Watson, NIWA</b> Queen Charlotte Sound
<b>Evgenia Bazhenova, NIWA</b> Seabed 2030 database	<b>Andrew Carroll, GA</b> Elizabeth, Middleton and the cyclone
	Questions
<b>Vicky Ferrini, LDEO</b> Global Multi-Resolution Topography A platform to deliver AusSeabed compilation on the fly	<b>Kim Picard</b> 10 year strategy Other business Discussion and wrap up
<b>Barbara Musso, MNF</b> 10-year strategy	
<b>Kam</b> – questions and close	

# Thank you

