



Australian Government
Department of Defence



HydroScheme Industry Partnership Program (HIPP)

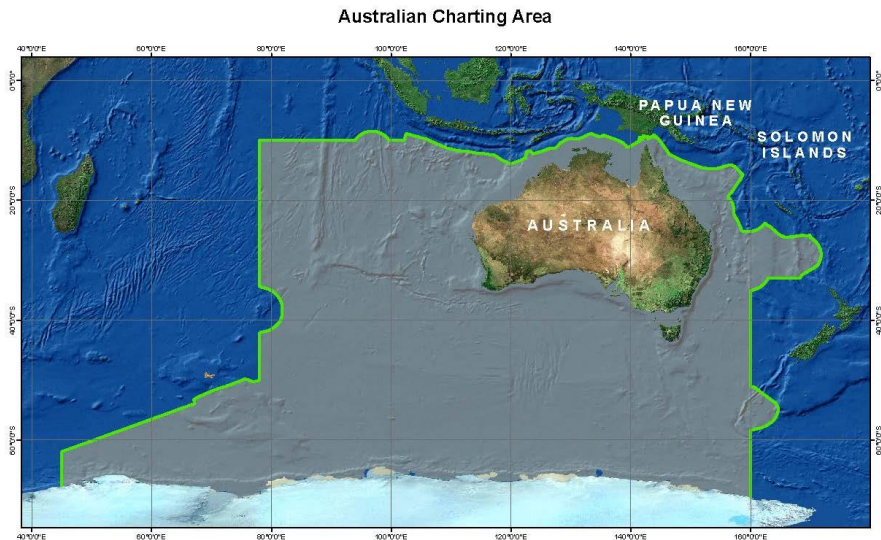
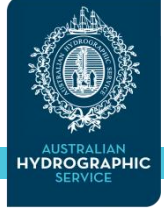
National Hydrographic Program



HIPP
HydroScheme Industry Partnership Program

Commander Nigel Townsend, RAN CPHS1
Assistant Director National Hydrographic Program

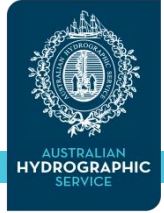
The Need – Meeting Australia's Obligations



- Defence has a long history of hydrographic survey and an ongoing obligation to the Nation:
 - United Nations Convention on the Law of the SEA (UNCLOS)
 - International Convention for the Safety of Life at SEA (SOLAS)
 - Navigation Act 2012
- Demand is growing for a whole-of-Nation hydrographic and oceanographic data collection program
- Environmental data gathering requires significant investment
 - Greater demand drives a need to partner with Industry
- Current processes and way of doing business needs to change significantly to meet Australia's current and future requirements



HydroScheme Industry Partnership Program (HIPP)

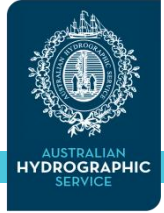


■ HIPP Strategic Objectives:

- To obtain full, high quality EEZ bathy coverage by 2050
- To link Chart Datum to National Ellipsoid through development of AusHydriod by 2030
- Integrate HIPP activities into the National Plan for MBES Bathy Data Acquisition
- Provide environmental data to baseline Australia's marine estate
- Support hydrographic survey of remote locations (AAT, Heard and McDonald Is)
- Support development of an organic tertiary hydrographic education program
- Build the Hydrographic Industry in Australia
- Support regional capacity building programs
- Adhere to intent of Aust Gov's Data Availability and Use Policy



HIPP - Phases

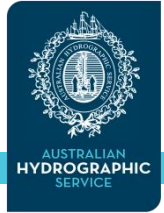


- **HIPP has two major phases:**
 - HIPP Phase 1: 2020 – 2024 (Ramp-up Period)
 - Priority for Safety of Navigation tasks and incidental scientific collect tasks in conjunction with industry growing it's capability and capacity
 - HIPP Phase 2: 2024 onwards (Mature Period)
 - Mix of priority safety of navigation tasks and scientific collect tasks
 - Expanded geographic coverage (deep water)
 - Address hydrographic and oceanographic training capabilities
 - Become an enduring Government Activity

- **HIPP is an enduring partnership program between whole of government and industry**



HIPP is now operational



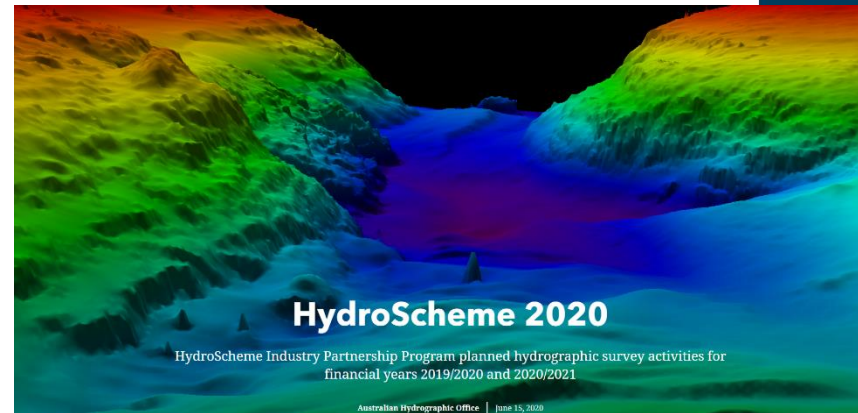
- HIPP Phase 1 commenced on 28 Feb 2020 with the signing of the initial HIPP deeds in Canberra.
- Seven Companies selected for HIPP Phase 1 Panel – these are:



HydroScheme

- Annual Plan for HIPP Panel, referred to as HydroScheme 2020 – with the year referring to the year of publication.
- HydroScheme is published in October each year for the following Financial Years survey activity.
- HydroScheme is published as a ESRI Story Map and is a dynamic Document, it will include updates on the award of surveys and progress of data collection
- A Survey Instruction (SI) will be issued for each survey listed in the HydroScheme
- HydroScheme can be found at :

www.hydro.gov.au/NHP



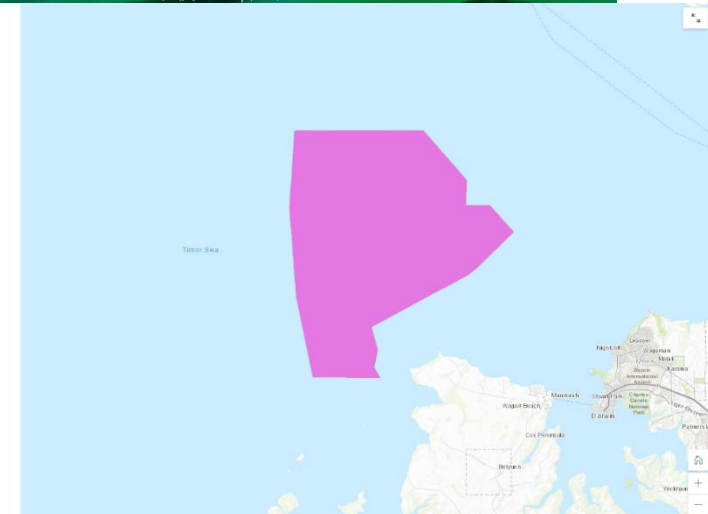
SI 1002 - Approaches to Darwin

Beagle Gulf, NT

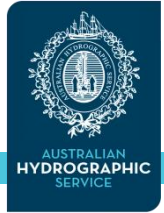


- Status: In Progress
- Date: Jun 20 - Oct 20
- Area: 214 NM²

Beagle Gulf forms the western approach to the Port of Darwin, which services cargo vessels, cruise ships, naval vessels and numerous recreational vessels. A significant volume of shipping transits the area en route to Asia and the offshore oil and gas fields of the Ararua and Timor Seas. Areas of low quality data exist



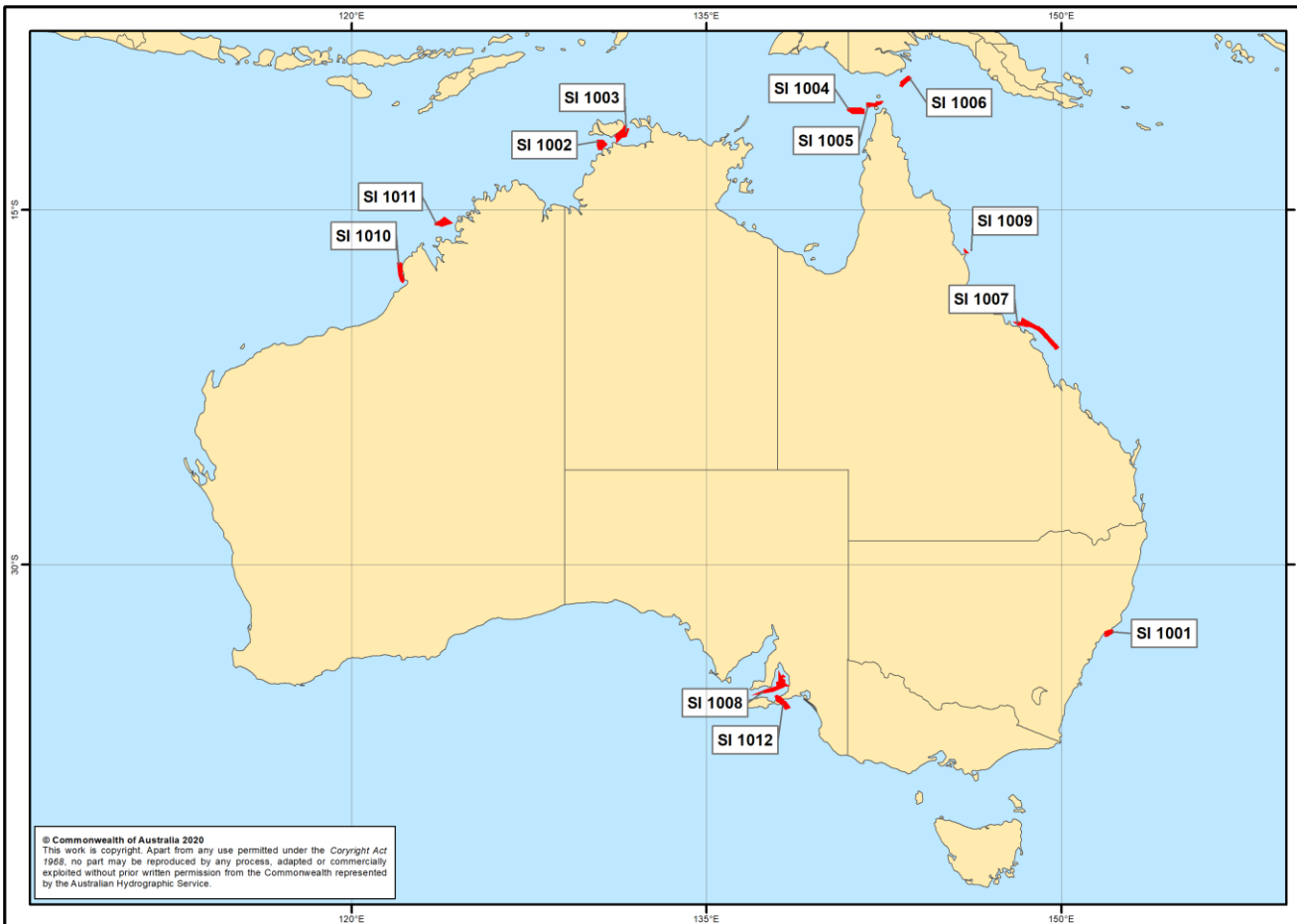
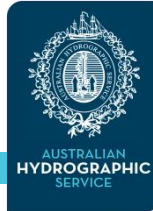
HydroScheme 2020 – Work has commenced



- Published on 28 February 2020
- 10 x SI issued to Panel Members from 06 March 2020
- Updated in May due to COVID 19 restrictions
 - 3 x Additional SI issued, 2 delayed until FY 21/22
- First contract awarded 29 April 2020 to iXblue
 - SI 1009 – Cairns Reference Areas
 - Data collection completed 30 May 20
- Second contract awarded 18 May 2020 to PHS
 - SI 1002 – Approaches to Darwin – Beagle gulf
 - Mobilising in Darwin 05 July 2020



HIPP HydroScheme



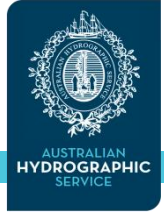
HIPP Surveys FY 2020 / 2021



SI Number	Survey Title - Location	Dates
SI 1000	Torres Strait Tidal Infrastructure	Jan 21 – Jan 24
SI 1001	Approaches to Newcastle (NSW)	Jan – Feb 21
SI 1002	Approaches to Darwin, Beagle Gulf (NT)	Jul – Aug 20
SI 1003	Van Diemen Gulf (NT) – Delayed	FY 21/22
SI 1004	Western Approaches to Torres Strait (QLD)	26 Jun 20
SI 1005	Torres Strait UKCMA (QLD)– Delayed	FY 21/22
SI 1006	Great North East Channel (QLD)	Feb – Apr 21
SI 1007	Whitsunday Islands to Hydrographers Passage (QLD)	Oct – Dec 20
SI 1008	Gulf St Vincent (SA)	Sep – Dec 20
SI 1009	Cairns Area Reference Surface (QLD)	May - Jun 20
SI 1010	Nth App to Broome, Grantheaume Pt to Talboys Rock (WA)	Jul – Sep 20
SI 1011	Mavis Reef (WA)	Aug – Nov 20
SI 1012	Backstairs Passage – (SA)	Jan – May 21



HIPP & AusSeabed

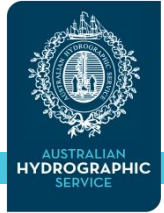


Sub-Areas	Calculated Area
Area Name 1	489km ²
Area Name 2	895km ²
Area Name 3	765km ²

- A HIPP Survey request tool has been developed with AusSeabed to allow any organisation to request an Area of Interest to be considered for a HIPP Survey
- Available on the AusSeabed Survey Coordination Tool and Expected to go Live in Aug 2020
- Planned HIPP Surveys will be on the AusSeabed Survey Coordination Tool
- HIPP Data is intended to be available through AusSeaBed once approved.

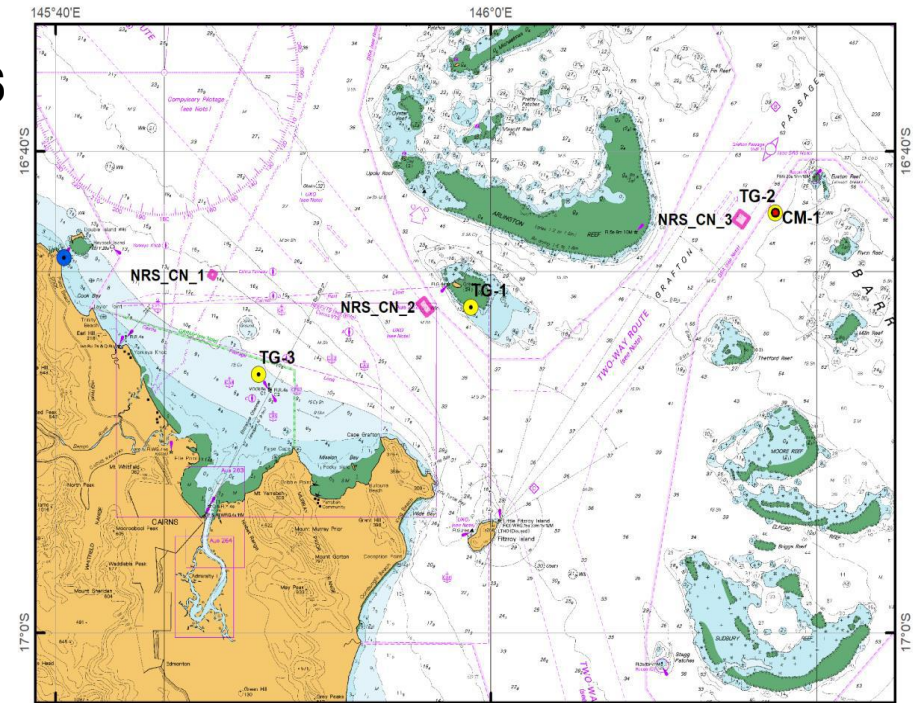


National MBES Reference Areas



- HIPP is establishing a series of MBES Reference patches at various depths around the country for anyone to validate their MBES against.
- Will be available on the AusSeabed Data Hub
- Will be known as National Reference Areas
- By Jul 2021 we will have sites off
 - Cairns
 - Darwin
 - Torres Strait
 - Broome
 - Adelaide
- Cairns Reference Areas have been surveyed.

NOT TO BE USED FOR NAVIGATION

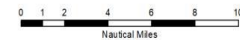


CAIRNS AREA HYDROID AND REFERENCE SURFACES

© Commonwealth of Australia 2020
 This work is copyright. Apart from any use permitted under the Copyright Act 1969, no part may be reproduced by any process, adapted or commercially exploited without prior written permission from the Commonwealth represented by the Australian Hydrographic Office.

Legend

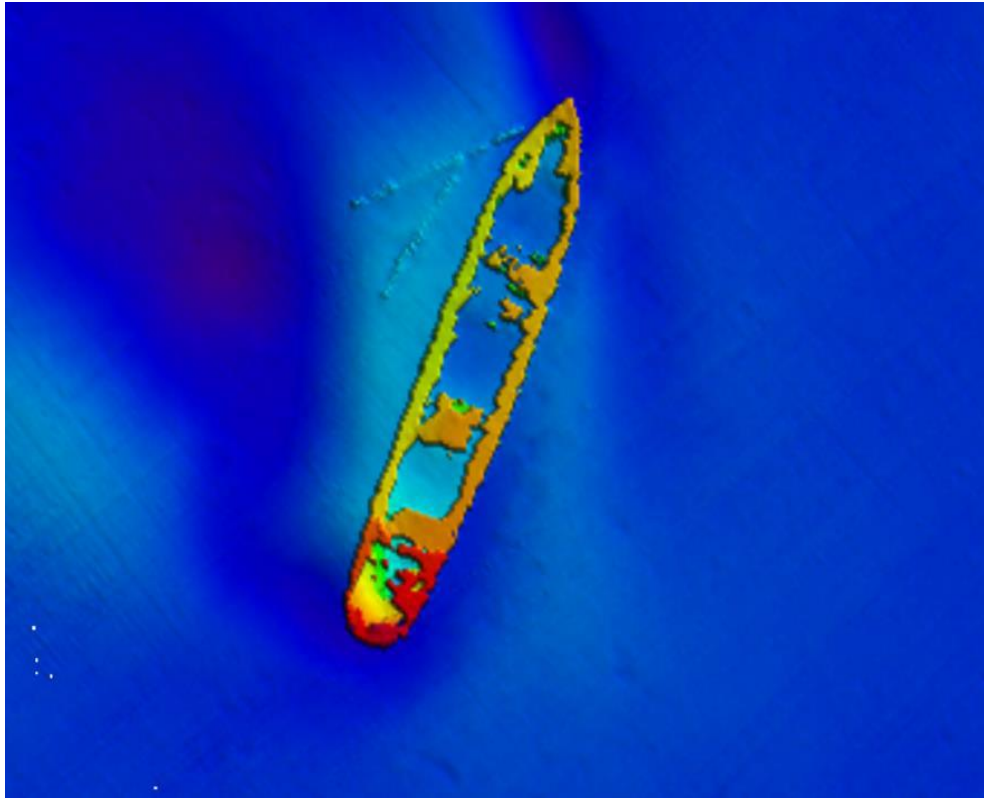
- Reference Surfaces
- Planned Tidal Infrastructure
- Tide Stations
- Current Meter
- Tide Gauge



Australian Government
 Department of Defence



HIPP
 HydroScheme Industry Partnership Program



- Green Island Wreck – Cairns
- Surveyed by iXBlue - 2020

iXblue

- Contact us at HIPP@Hydro.gov.au