



Government of Western Australia  
Department of Water and Environmental Regulation

*We're working for  
Western Australia*

# IMSA

A circular icon containing a stylized white coral reef structure on a blue background.

Index of  
Marine Surveys  
for Assessments

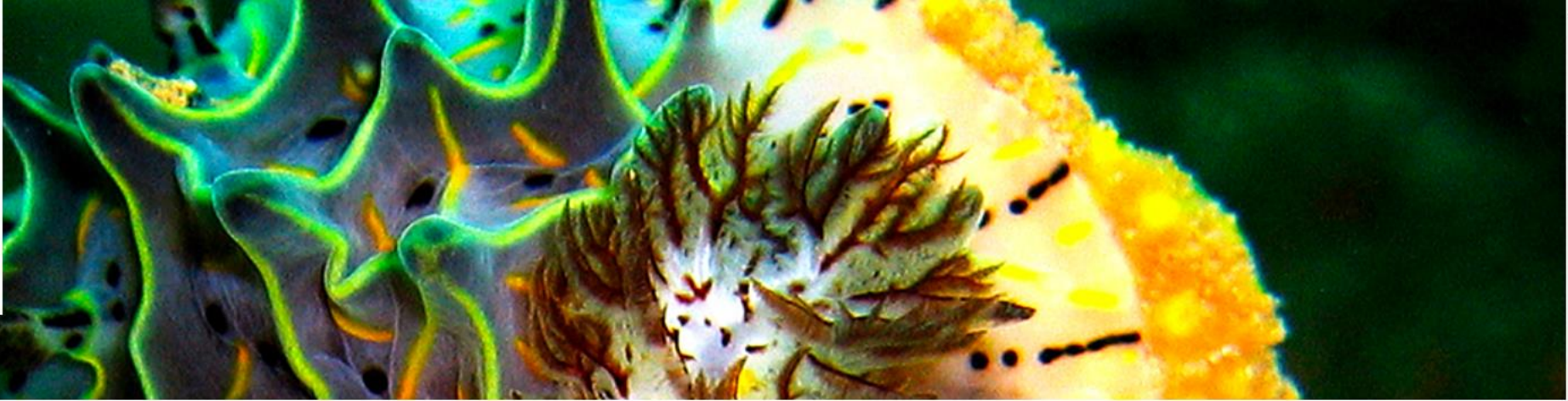


WESTERN AUSTRALIAN  
MARINE SCIENCE  
INSTITUTION



GOVERNMENT OF  
WESTERN AUSTRALIA

Department of  
**Water and Environmental  
Regulation**



## Index of Marine Surveys for Assessments (IMSA)



Sort by Most recent Name Relevance Organisation Projects per page 20 50 100 500



### Filter results

#### - Receiving agency

- Environmental Protection Authority - Marine (1...
- I G E M ( Industry- Government Environmental ...
- Voluntary data provision (1)

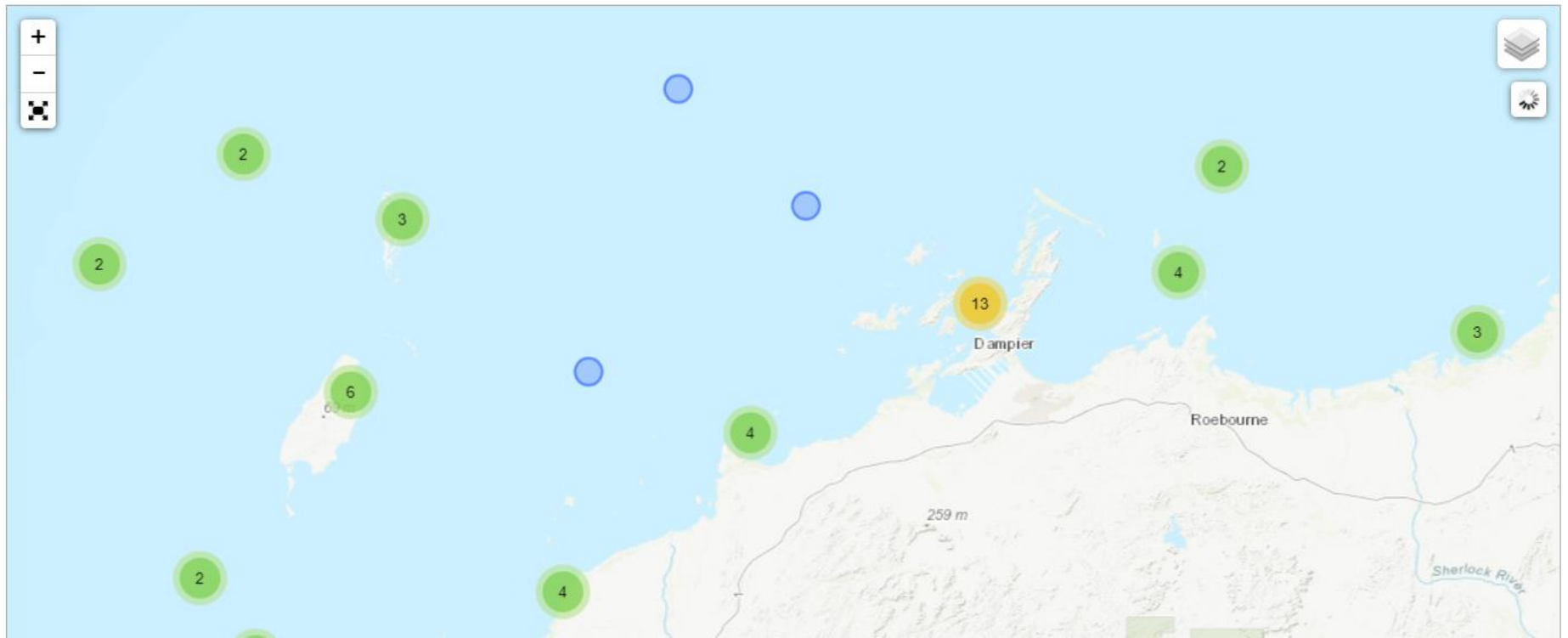
#### - Assessment type

- Environmental Impact Assessment ( Part I V ) (...
- Other marine surveys and data (173)

#### - Author

- 360 Environmental (2)
- A P I Management Pty Limited (2)
- Advisian (3)
- Asia- Pacific Applied Science Associates (3)
- B H P Billiton (1)
- B M T (19)

Displaying 1 to 287 surveys





Index of  
Marine Surveys  
for Assessments

## **DWER's online portal for marine survey reports and data used in environmental impact assessment**

Facilitates the exchange and sharing of data sets and knowledge amongst industry and government

Free and accessible baseline information provides a head start and allows more targeted assessment of impacts.

Shared knowledge leads to continual improvement of impact predictions and management practices – closing the loop

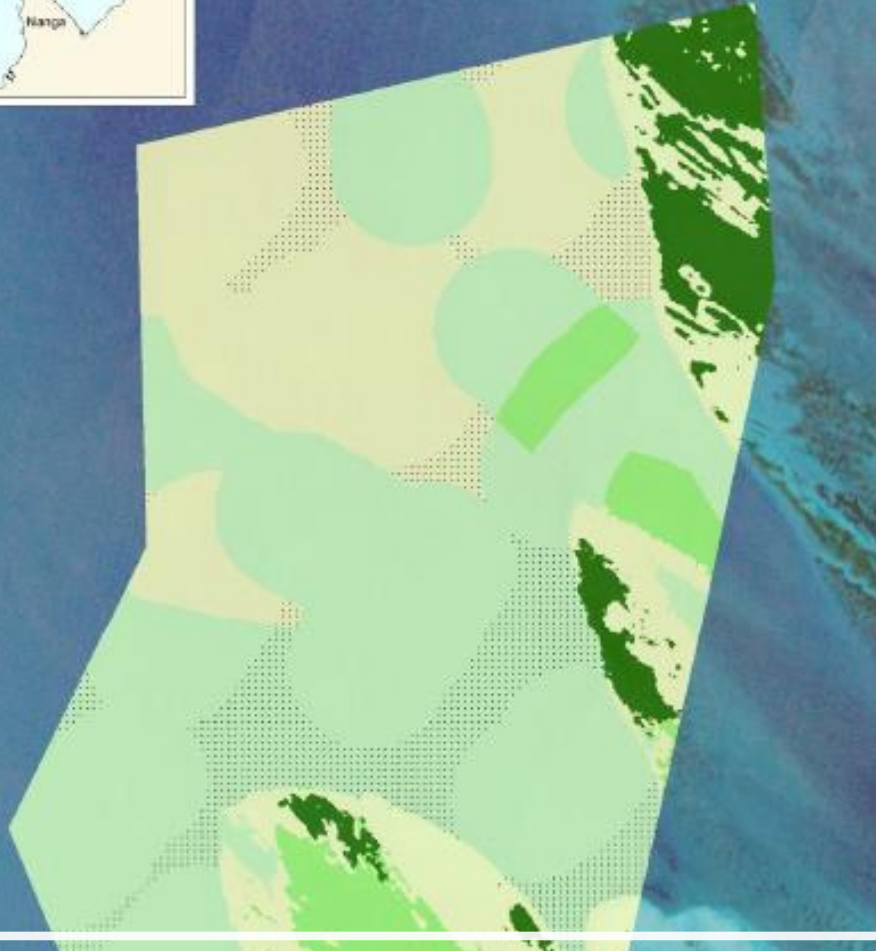
Delivers cost savings to industry and streamlines the EIA process



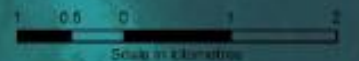
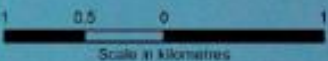
Index of  
Marine Surveys  
for Assessments

- 
- IMSA has developed the first comprehensive data standards for marine environmental surveys in Australia.
  - An extensive list of marine data experts has contributed to these standards which are included within the *EPA Instructions for the Preparation of Data Packages for the Index of Marine Surveys for Assessments*, available on the EPA website.





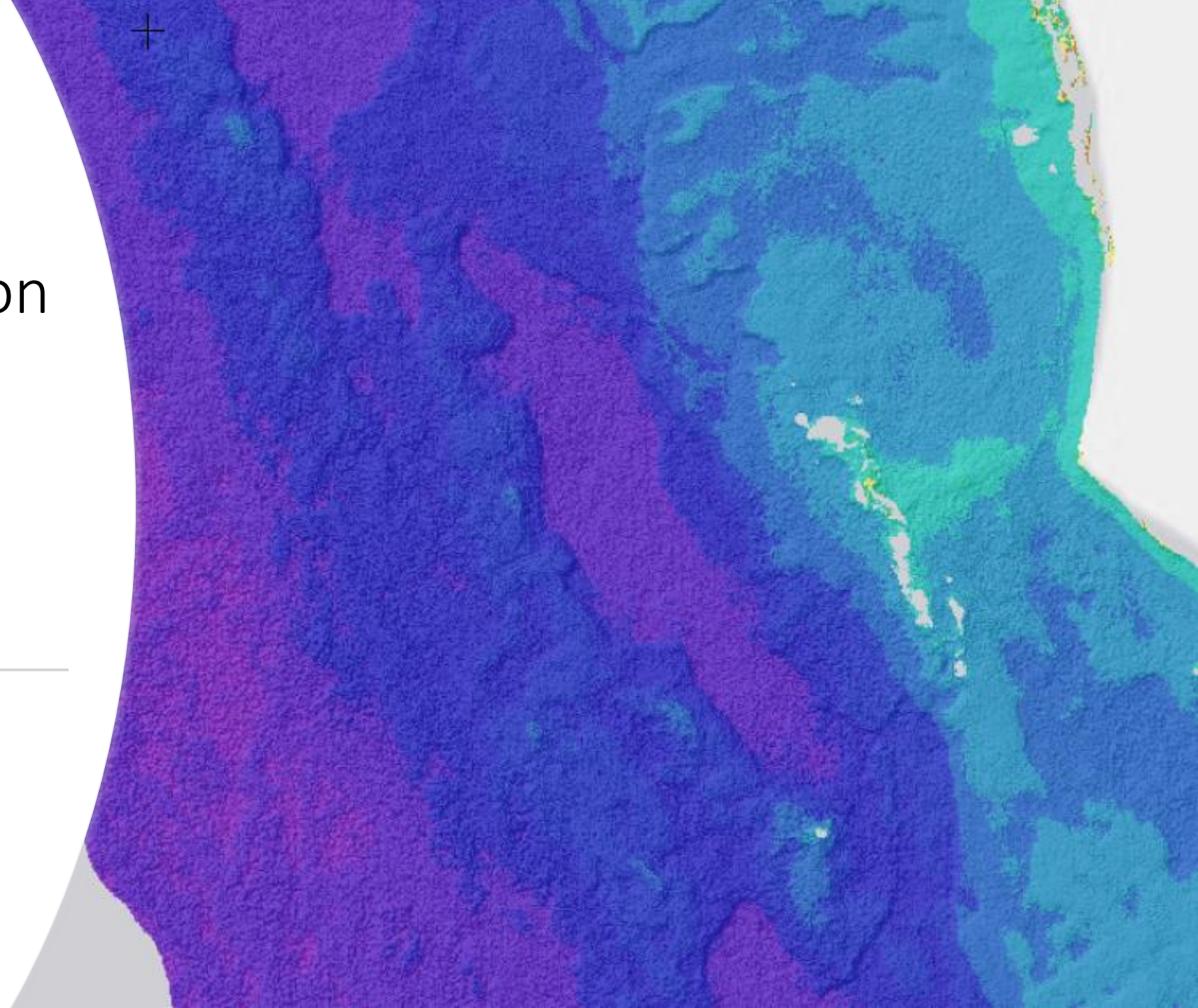
Benthic habitat extent and distribution, Shark Bay



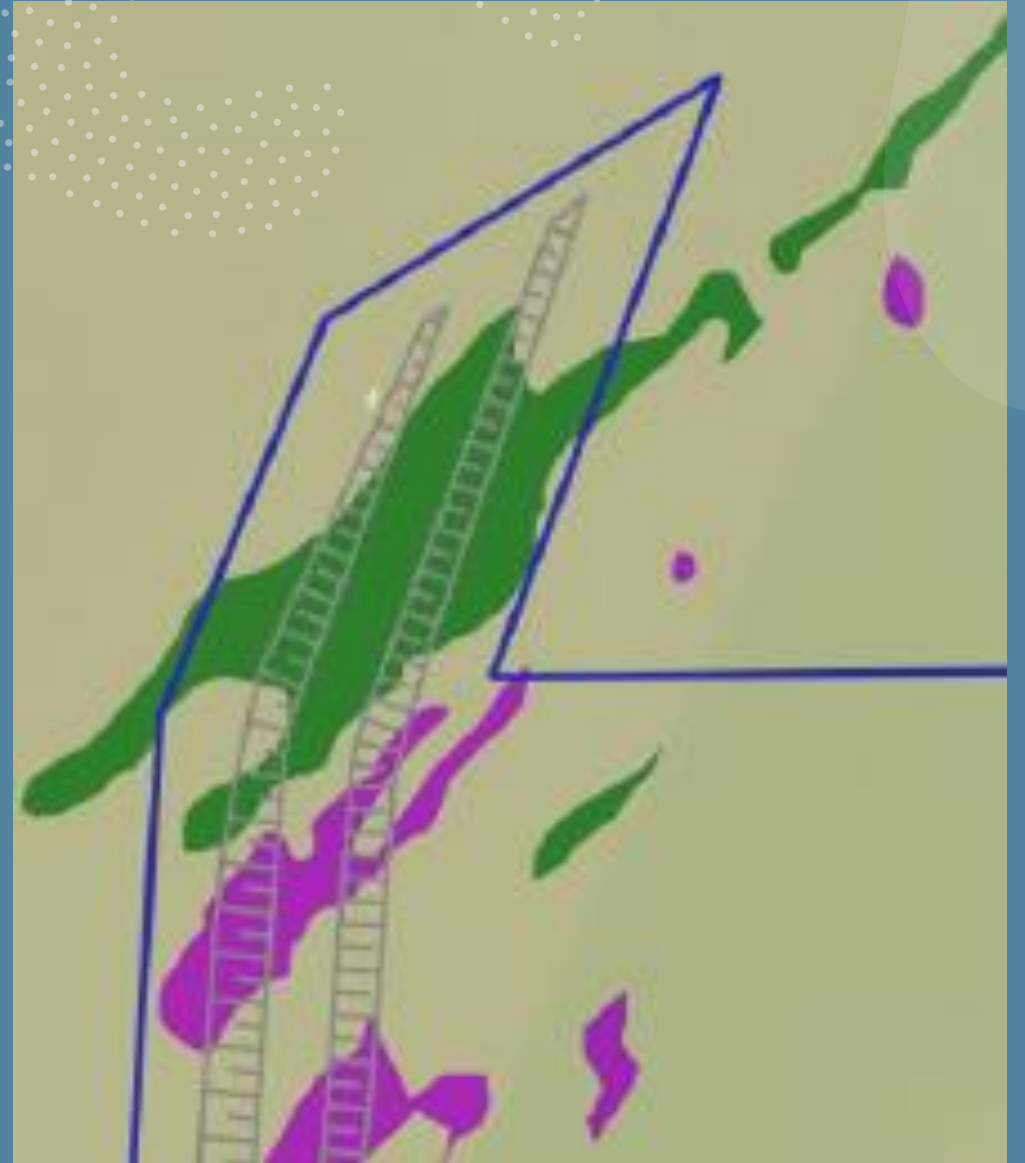


Very high-resolution  
Satellite Derived  
Bathymetry –  
Department of  
Defence

---

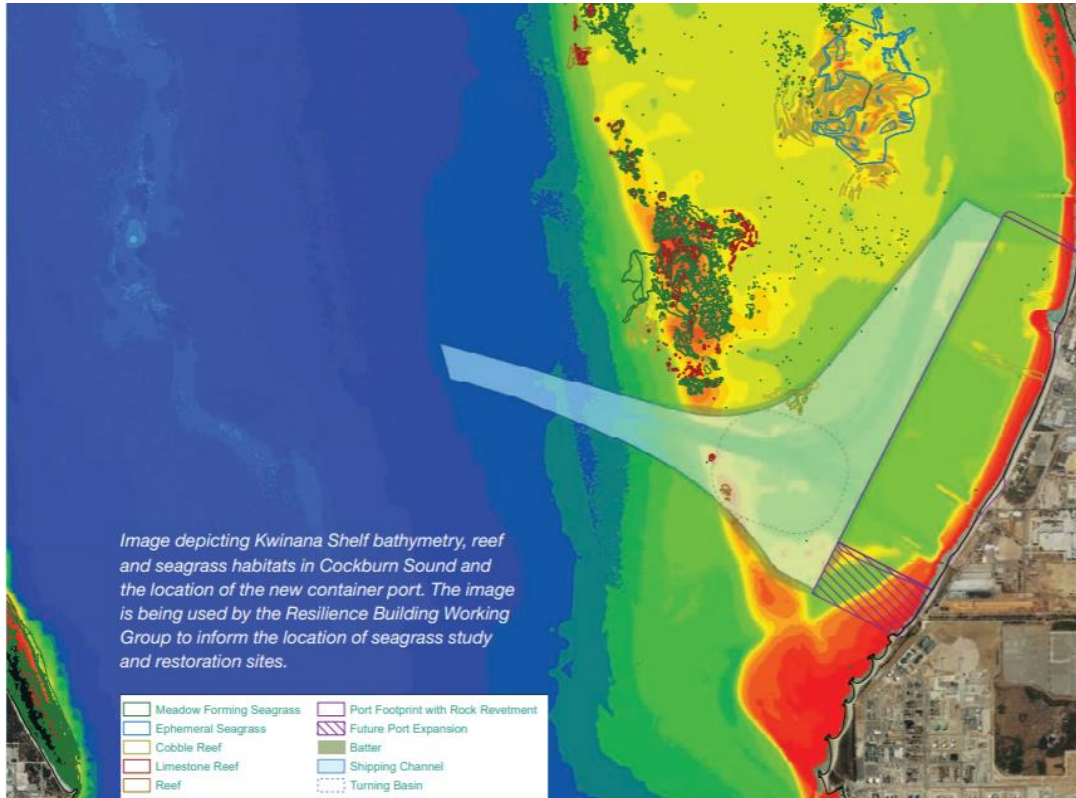


IMSA data already being used for new coastal development projects and other regulatory processes such as Part V clearing permits for aquatic vegetation





Index of  
Marine Surveys  
for Assessments



- Next step: explore how to curate, analyse and re-interpret IMSA data to improve impact predictions.
- Test case: Westport and assessment of cumulative impacts.