



AusSeabed Annual Report

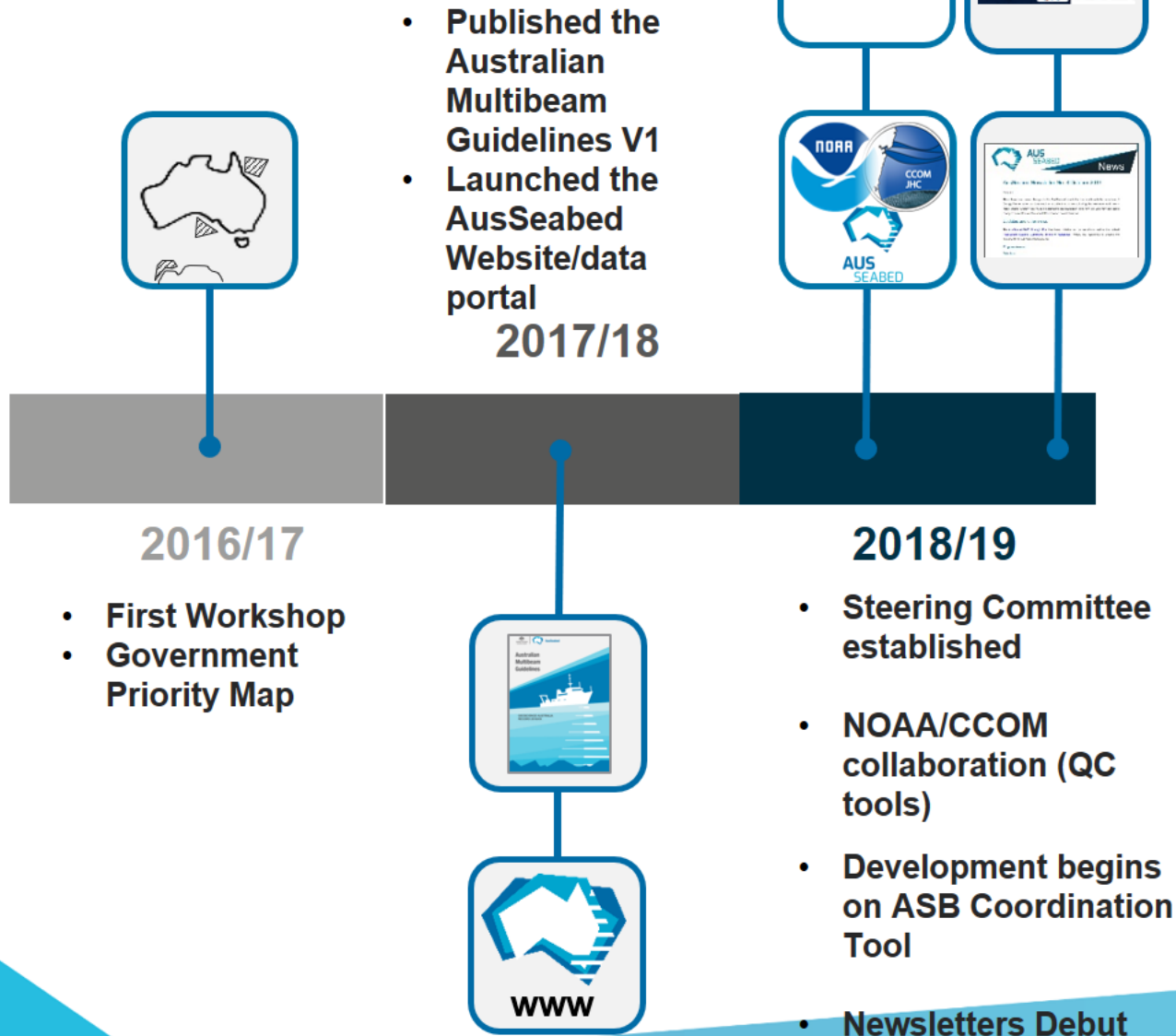
2019/20 Highlights

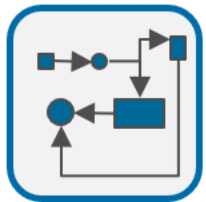
Aero Leplastrier (GA Geoscience Australia)

AusSeabed Steering Committee Secretary



AusSeabed progress



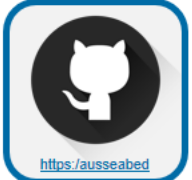


- Developed a prototype automated processing pipeline

- Established an Executive Board

- Developed V2 Australian Multibeam Guidelines
- Established a 10 year work-plan

2019/20 Highlights



- Open source code for tools released through GitHub

- Progressed development of ASB Coordination Tool and QC tools

- Published 2030 Strategic Plan



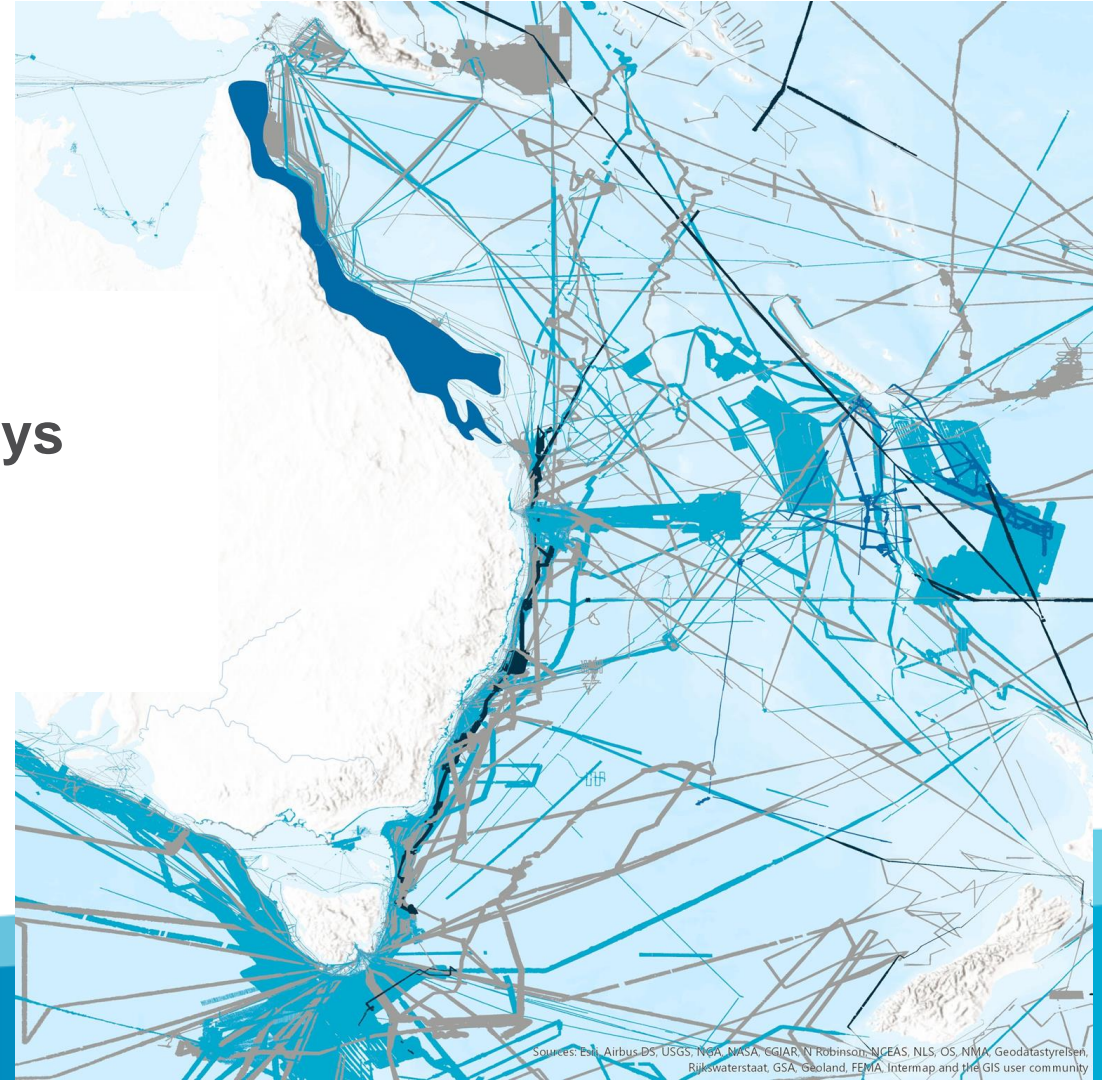
- Developed MVP Data Warehouse

- Launched Upgraded data portal

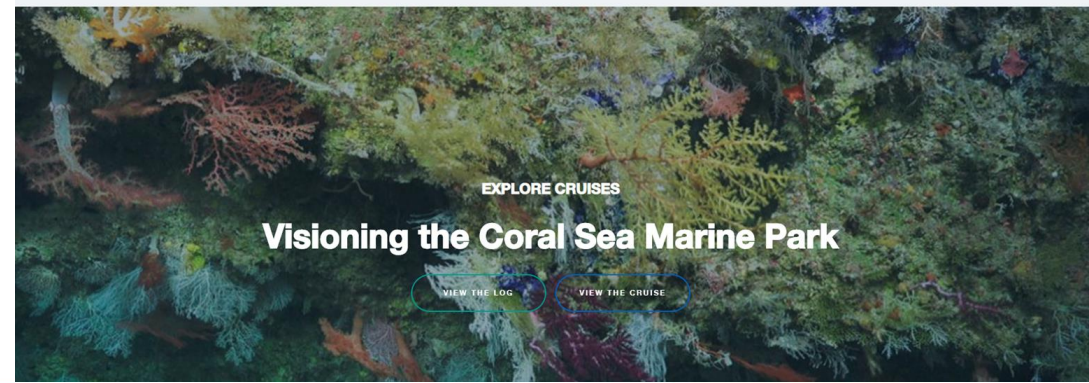
Uncovering data: 2020 coverage



2020
>2500 surveys



Increasing efficiency



AusSeabed Marine Data Portal

About Layers Location Search Reports Analytics Assessment Tools Clip

Layers

- Base Layers
- All Layers
- AusSeabed Coordination
- Elevation and Depth
- Bathymetry - Compilations
- Bathymetry

Survey summary	
Multibeam	35,000km ² Data 12 TB
Dives	14; 93hrs; 1564m deep

Davis Harbour Antarctica Bathymetry 2017 2m
Visioning the Coral Sea Bathymetry 2020 64m

Cairns

100 km

Lon: 145.51, Lat: -17.22

3D

Local hub : One step towards federated hub



AUS
SEABED

AusSeabed Marine Data Portal



About Layers Location Search Reports

Analytics Assessment Tools Clip

3D Layers

Custom Layers

Add Local Data

Add Web Data

A list of WMS web services produced by Geoscience Australia can be found here or via searching eCat.

Select Service Type

Data file or web service URL

NEW CALYDON

Search

https://www.cmar.csiro.au/geoserver/ausbed/CSIRO_WMS_bathymetry/wms

CSIRO_WMS_bathymetry

About

Legend

Filter

Fit
Extent

Remove

Opacity

100%

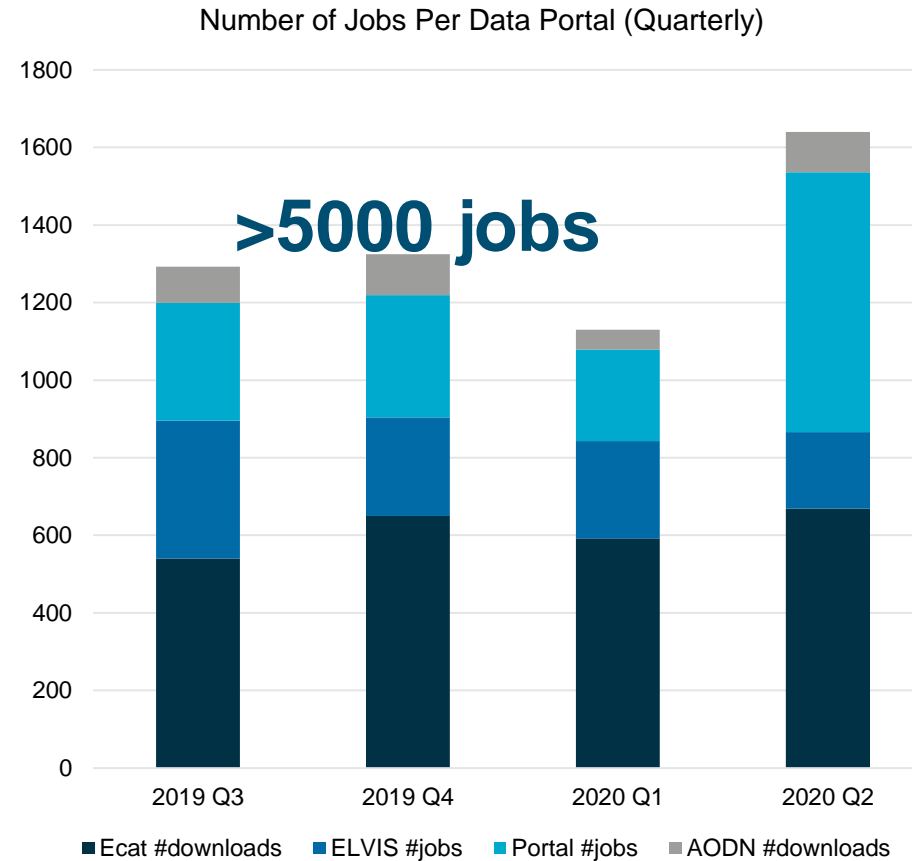


Lon: 171.90, Lat: -23.81

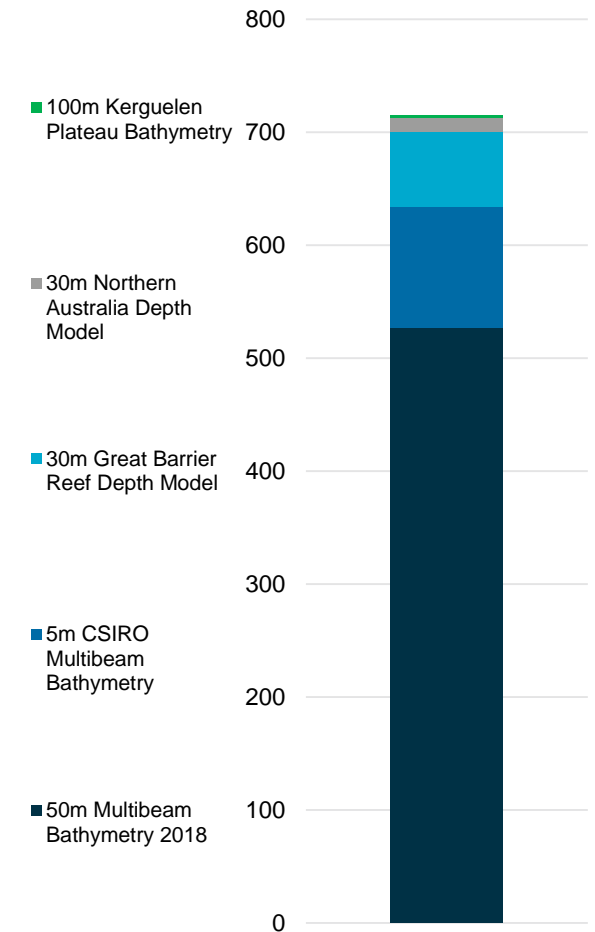
Continuous uptake

Preliminary statistics:

- > 55% increase in # users (2018/19 & 2019/20)
- > 50% in # jobs (2018/19 and 2019/20)
- >5000 jobs for data download in 2019/20 (incl. high-resolution survey datasets)
- 100GB data extracted from AusSeabed Portal (47% increase since last FY)



AusSeabed Portal Downloads 2020 Q2



Outreach

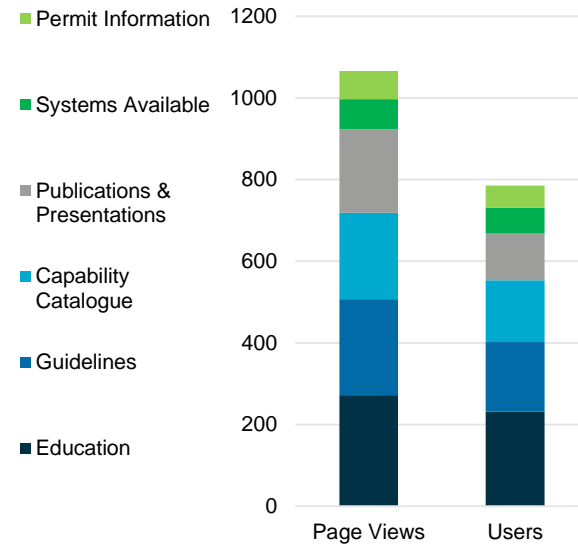
Community Engagement 2019/20 FY

- International Cable Protection Committee
- GEBCO 2019 Portsmouth, USA
- Seabed 2030
- OceanObs '19, Honolulu, USA
- WALIS Marine Group
- Western Australia Harbour Masters
- Australasian Hydrographic Society
- World Ocean Day
- Hypack Conference
- CTCN South Pacific Mapping Project
- Fiji Hydro Day
- WA Index for Marine Survey Assessment Meeting
- NSW Coastal Conference
- Waves Conference Melbourne
- Engineers Australia

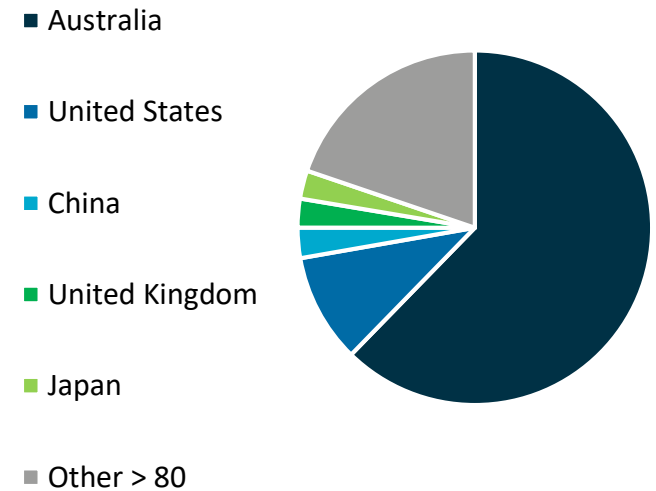
Website statistics 2019/20 FY

- 49% increase in sessions since last FY (>4,300)
- 23% increase in page views since last FY (>9,600)
- 55% increase in users since last FY (> 2,900)

"Resources" Views and Users



Web Sessions by Country





Australian Government
Geoscience Australia



Environment,
Land, Water
and Planning



Department of Transport



Australian Government



Australian Government
Australian Maritime Safety Authority

AUS
SEABED



Australian Government
Department of Agriculture, Water and the Environment
Australian Antarctic Division



Australian Government
Great Barrier Reef
Marine Park Authority



Government
of South Australia

